

Please read and follow the instructions carefully. You may also scan the QR code below to view the operation video:

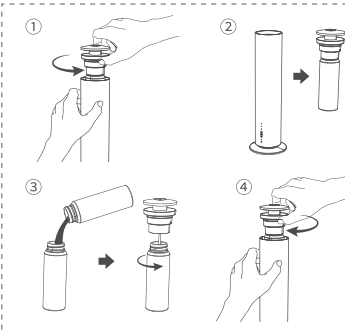


Scan the QR code to download the app  
Equipment Operation Video  
Equipment after-sales Video

The device is easy to operate and offers three control modes: button control, remote control, and app control.

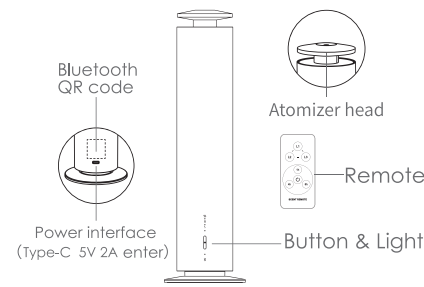
## 1 INSTALLATION

Rotate the atomizer head counterclockwise by 30 degrees, then lift it upward to remove both the atomizer head and essential oil bottle. Add an appropriate amount of essential oil, tighten the bottle in the direction of the arrow, and reassemble all components back into the device.



**TILT ALARM:** After adding the essential oil, it should not be inverted or tilted, as this may damage the internal components. If the device is tilted beyond 45°, it will emit a "beep-beep" alarm sound for 10s, then stop working. It will resume normal operation only after the device is restored to an upright position.

## 2 BUTTON CONTROL



- Level Light**
- ◆ Illuminates white for the selected level; turns off when paused.
  - ◆ Flashes cyclically in Bluetooth mode.
- Level 3:** On for 16s, Off for 60s
- Level 2:** On for 16s, Off for 180s
- Level 1:** On for 16s, Off for 300s
- Level/Factory Reset Buttons**
- ◆ Short press to switch level.
  - ◆ Long press for 5 seconds to restore factory settings.
- Power Light/Bluetooth Light**
- ◆ Fully charged: The indicator shows green light always on.
  - ◆ Charging: The indicator shows red light always on.
  - ◆ Medium Battery: The indicator shows yellow is always on.
  - ◆ Low Battery: The indicator shows red flashing.
  - ◆ After connecting to Bluetooth, the indicator light turns blue.
- Power / Ambient Light Button**
- ◆ Long press for 2 seconds to turn on/off
  - ◆ Short press to switch ambient light

### ◆ Power/Ambient Light Button

- Long - press the "Power Button" for 2 seconds to turn on and enter working mode; Long - press again to turn off the device, then the device will stop working, and all lights will go out.

- Briefly press the "Power Button" to cycle through ambient light colors: "White Light," "Yellow Light," "Blue Light," and "Off" in sequence.

### ◆ Battery Indicator Light (Power light)

Light Status	Charging Display Description
Red Flashing	Low Battery
Red Steady On	Charging
Yellow Steady On	Medium Battery
Green Steady On	Fully Charged

**◆ Level Button |** Press the "Level" button to cycle through the levels, with the corresponding level light illuminating:

Level	Level Light	On/Off Duration
Level 1	1 white light on	On for 16s, Off for 300s, 24-hour cycle
Level 2	2 white lights on	On for 16s, Off for 180s, 24-hour cycle
Level 3	3 white lights on	On for 16s, Off for 60s, 24-hour cycle
Paused	All lights off	/

**◆ Factory Reset |** Press and hold the Level Button for 5 seconds to restore factory settings. The battery indicator light will flash quickly 3 times in green, and the device will emit a "beep beep beep" sound prompt.

**Default setting:** Level 2, with the device working in a full-day cycle.

**Note:** - The device emits a "beep" sound when buttons are pressed.

- Upon receiving signals from the remote control or Bluetooth: The power indicator flashes green rapidly 3 times. The device emits a "beep-beep" sound.

- After Bluetooth connection: The power indicator turns blue. Level indicators turn OFF (device operates in Bluetooth-set mode, ignoring physical level settings).

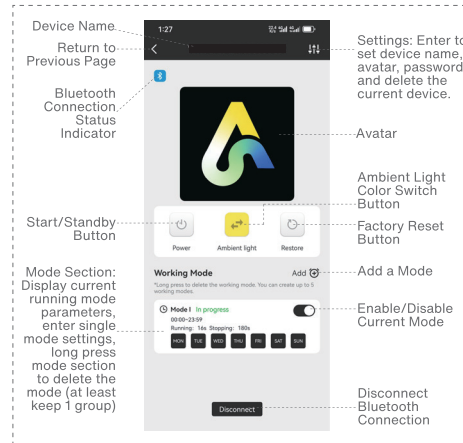
## 3 APP CONTROL (BLUETOOTH MODE)

After Bluetooth connection, the device immediately switches to Bluetooth mode and operates according to the Bluetooth settings:

Scan the QR code with your phone to download and install the "Ari Diffuser" APP → Run the APP → Select "Start Adding" → Go to the "Search and Connect" page, search for and connect to the device.

You can also click the "Scan" icon in the upper right corner to scan the Bluetooth QR code on the device to connect it.

**Note:** It is recommended to allow all APP permissions, including location services, Bluetooth connection, and sending notifications.



**◆ All devices |** Available devices within the phone's Bluetooth range are displayed in the "All Devices" group, click on any device icon to connect to that device, after successful connection, it will jump to the device details page.

**◆ My Devices |** Devices that have been connected are displayed in the "My Devices" group, devices not currently within Bluetooth range are shown in gray.

### ◆ Device Status Page

**Switch colors:** Turn off the ambient light and change its color.

**Toggle:** The phone can turn the device's operating status on/off with one click.

**Factory Reset:** The phone can reset to factory settings with one click.

**◆ More Settings |** Click the "Settings" button in the upper right corner to access "More Settings":

① **Change device name & avatar** (this setting can only be saved locally on the phone)

② **Bluetooth password setting:** Set a password for Bluetooth device connection. Anyone connecting to the device next time will need to enter the password. If no password is required, click "No Password".

③ **Delete Device:** Disconnect the Bluetooth connection of the device and remove it from the history in the "My Devices" section.

**◆ Working Mode |** Click "Add" to create up to 5 working modes, click the switch button in the upper right corner of the mode window to turn the mode on/off, long press the mode window to select delete mode, click the mode window to customize and edit days of the week, time periods, and frequency.

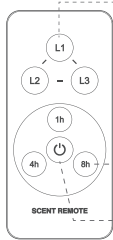
① **Day Setting:** Select the desired days.

② **Time Period Setting:** Adjust the dial to select the working time period.

**Note:** If the time period needs to cross 00:00, it must be set as two consecutive time periods (the end time cannot be less than the start time), for example, 23:00~02:00, set as two groups: 23:00~23:59, 00:00~02:00.

③ **Frequency Setting:** Adjust the dial to select the working frequency.

Operating time range: 1~30 seconds; Pause time range: 60~500 seconds.



Level Button

- ◆ L1 (Level 1): On for 16s, Off for 300s
- ◆ L2 (Level 2): On for 16s, Off for 180s
- ◆ L3 (Level 3): On for 16s, Off for 60s
- ◆ Long press button L1 for 5 seconds to restore factory settings.

Timer Button

- ◆ 1h: 1-hour timer
- ◆ 4h: 4-hour timer
- ◆ 8h: 8-hour timer

◆ Start/Standby Buttons  
◆ Match the remote control with the device:

Press and hold the standby button, then press and hold the power button on the device for 2 seconds to switch on the device, and wait until the green light on the device blinks to complete the pairing.

◆ **Match the remote control with the device** | Turn off the device, hold down the remote's standby button, then press and hold the device's "Power Button" for 2 seconds to turn on, to complete matching with the specified device.

The remote control can set three concentration levels, three timer levels, and on/off:

◆ **Level Button** | Press any L1/L2/L3 level button to switch working levels, with on/off duration the same as the button mode described above.

◆ **Timer Button** | Press the "1h/4h/8h" button to set the working time to 1h/4h/8h, the device will stop working after reaching the set time; if the remote sets the working level without timer setting, the device will default to a 24-hour cycle.

◆ **Toggle** | Press to Start/Standby.

**Note:** The device's working mode is based on the last action (button, remote, Bluetooth), for example: after Bluetooth disconnection, the device continues to work in Bluetooth mode.

Grade	On time(s)	Pause time(s)	Consumption (g/h)
Level 1	16s	300s	0.10
Level 2 (Default Level)	16s	180s	0.14
Level 3	16s	60s	0.37

**Note:** The data is for reference only. The amount of mist produced by different essential oils may vary. The data above is based on the essential oil used in the test: Park Hyatt (density ≥ 0.95).

Scent diffusers require regular cleaning and maintenance every 1-2 months when in normal use. Below is the method for cleaning.

◆ **Spray nozzle cleaning**

\* Use 95% "alcohol + cotton swab" to gently wipe the nozzle, removing the residue of essential oil liquefaction

\* Cleaning the atomizer core can be cleaned by soaking a cotton swab in 95% alcohol and wiping the core with it, or by soaking the atomizer core in alcohol and then allowing it to dry.

◆ **Oil bottle cleaning**

\* **Before changing essential oils each time, clean the oil bottle with alcohol and allow it to dry completely.**

When equipment is not used for a long period, it is necessary to clean the internal nozzles and other components thoroughly.

\* Add 95% industrial alcohol to the empty bottle.

\* Turn on the device and run it for 10-15 minutes.

\* Turn off the device, pour out the alcohol from the bottle and let it dry before reassembling the device.

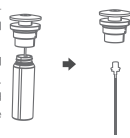
\* Power off storage, unplug the power supply, to prevent electrostatic damage to the circuit.

PRODUCT INFORMATION		
Size: 293x87x87mm	Weight: 730g	Power: 5W
Input: Type-5V/2A	Capacity: 120ml	Coverage: 200m³

◆ The atomizer head assembly consists of the atomizer head, atomizer assembly (atomizer core, and oil suction tube), and essential oil bottle.

◆ Operation steps: First, unscrew the essential oil bottle. Wipe the essential oil clean with a dry cloth. Then use pliers to remove the atomizer assembly and replace it with a new one. After that, reassemble all the components back into the device.

◆ **Hint:** Please note that all components must be tightened to prevent them from falling off.



◆ Replacement/Maintenance is guaranteed for one year from the date of purchase.

If you need to replace components for free within the warranty period, the device must be under normal use conditions and the failure must be due to manufacturing reasons to provide warranty. During the warranty period, component fees covered by the warranty are waived. This warranty does not include consumables such as oil. To obtain warranty service, please be sure to contact the after-sales department during the warranty period and present the original or copy of the valid warranty card and the official commercial invoice to the relevant departments.

◆ **The following situations do not enjoy free warranty service**

- ① Damage & problems caused by Accidents & Fire!
- ② Not used properly and wrong operation.
- ③ Repaired by non-professionals, causing some parts damaged.
- ④ Damaged during transportation.
- ⑤ Without our warranty card.
- ⑥ Without proper cleaning for a long time.
- ⑦ The machine is overworked.
- ⑧ Machines & Parts not from us.
- ⑨ Machines not purchased from official channels.
- ⑩ Send the machines back without permit from the manufacturer.



SAFETY PRECAUTIONS FOR USE

◆ **Safe use**

① After loading the essential oil, the device must always remain upright and facing upwards, not inverted or tilted, otherwise it may damage the internal components of the device.

② During the transportation of the equipment, it is necessary to empty the essential oils from the bottles to avoid oil leakage and damage to the equipment.

③ This device cannot be used for air humidification and cannot be filled with water;

④ Please place it in a location inaccessible to children and pets.

⑤ **Store in a dry and cool place, do not use this device in high temperature or humid environments.**

◆ **Forbidden**

① Do not cover the equipment in use.

② Prohibit the use of overloaded power outlets, power cords, or damaged power plugs, as this may damage equipment or even cause fires.

③ Essential oils should not be ingested and should be kept away from contact with the eyes. In case of eye contact, rinse thoroughly with plenty of water; if there is a strong sensation, seek medical attention immediately.

④ Please do not disassemble the equipment. If any abnormalities are found in the product, please contact us promptly.

User Manual



Smart Tower  
Scent Diffuser

Lithium battery model

*Scent machine*



[ Please read the manual carefully before use ]  
and keep it properly

Scent Diffuser (with bottle) x1	Power adapter x1	Atomizer core assembly x1	Remote Controller x1	Wrench x1	Pliers x1	After-sales card x1	User Manual x1